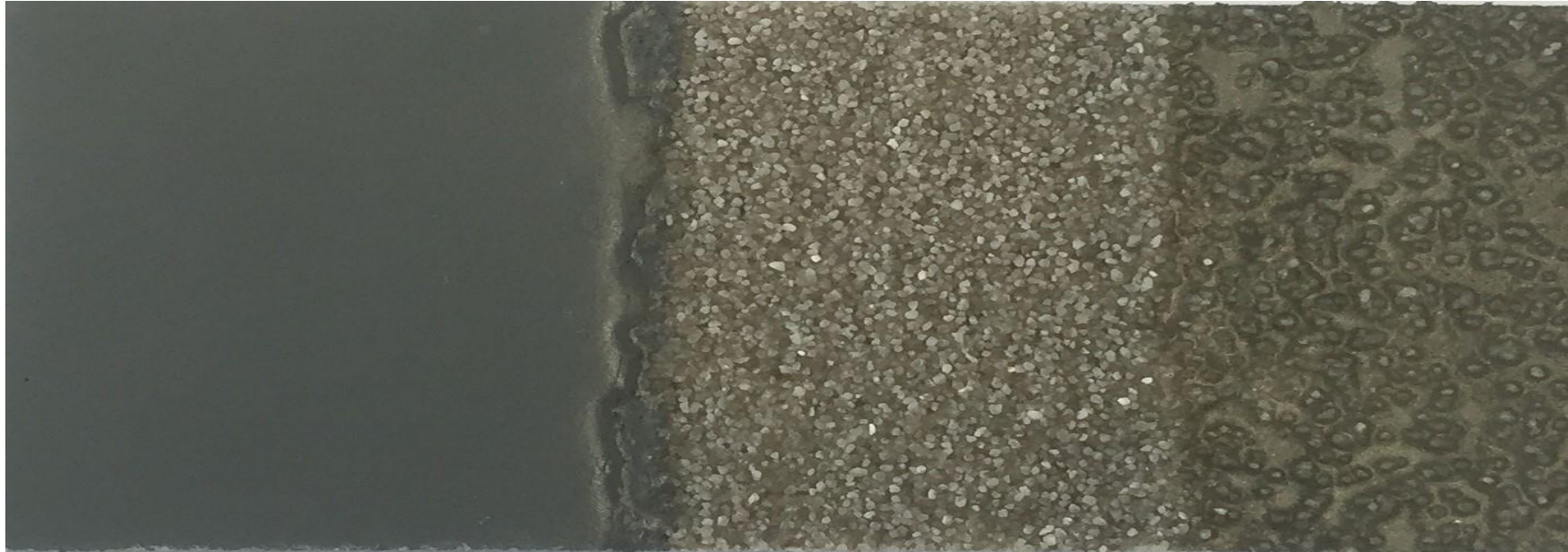


# Plastifloor® 418 the floor coating system for warehouses/loading zones

Easy to install, 2h after installation You can drive on it



## Sealer

Plastifloor® 522

100 ft<sup>2</sup>/gal

clear

Hardener/M

## Coating

Plastifloor® 418

30 ft<sup>2</sup>/gal; 1:1 with s/l filler\*

+ 10% pigment

## Membrane

Plastifloor® 332

30 ft<sup>2</sup>/gal; 1:1 with s/l filler\*

broadcast to excess 0,5 lbs/ft<sup>2</sup>

natural quartz

16-30 mesh

## Primer

Plastifloor® 112

75 – 100 ft<sup>2</sup>/gal

slight broadcast

natural quartz

16-30 mesh

(\*) by volume